

소통 플랫폼 ("SoTong" Platform)

네이버 밴드 (NAVER 'band')

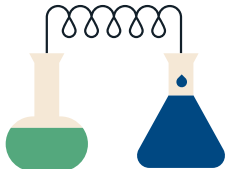
"Fast-track program for  
Global Talents in Sci & Tec"



맞춤형 지원 서비스

글로벌인재비자센터

☎ 042-862-8826

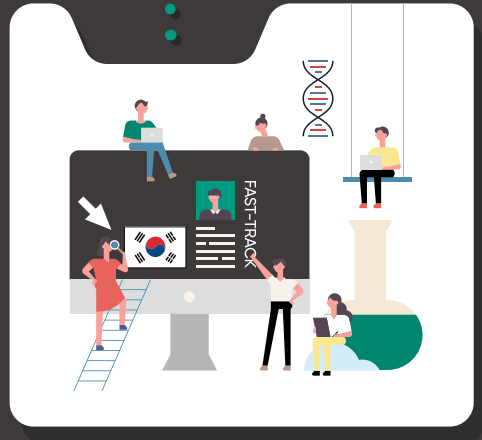


Fast-track program for  
Global Talents in Sci & Tec



과학·기술  
우수인재

영주·귀화  
패스트트랙



Ministry of Justice

## 우수인재 패스트트랙이란?

과학·기술 우수인재를 적극적으로 발굴·유치하고 맞춤형 지원서비스를 제공하여 신속하게 영주·국적을 부여하는 프로그램

### 왜?

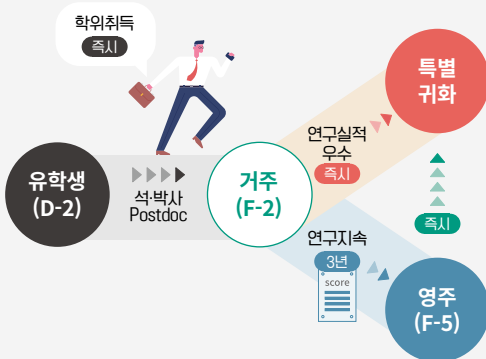
4차 산업혁명에 대비하여 첨단기술·신소재분야 등 과학·기술 우수 외국인재를 적극적으로 발굴하여 국내 정착 유도

### 누가?

이공계특성화 대학 및 연구기관 석박사 취득자 또는 졸업예정자

### 무엇을?

- 취업없이 거주 허용
- 연구지속 시 영주자격 부여
- 연구실적우수자 특별귀화



## What is Global Talents Fast-Track Program?

A program for discovering talents in science and engineering by offering them customized support services and granting permanent residency and nationality fast.

### What Is the Purpose of This Program?

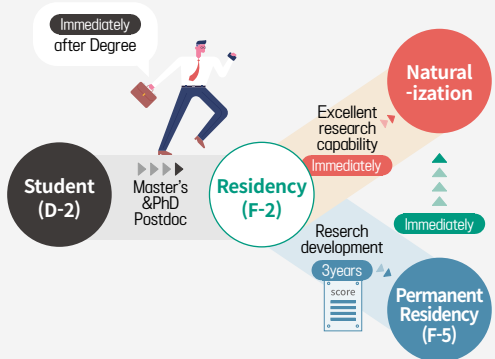
To prepare for the 4th Industrial Revolution, discover outstanding foreign talents in science and engineering fields such as high-tech and advanced materials and promote their settlement into Korean society.

### For Whom?

Individuals who are pursuing or have earned a Master's or Doctor's degree in science and engineering universities and research institutions.

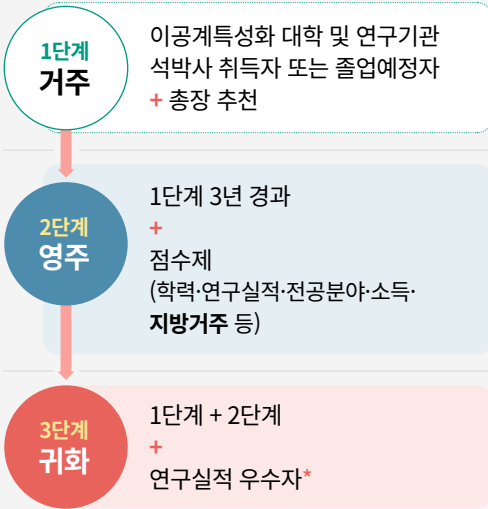
### What?

- Residency visa will be granted even if you are not employed
- Permanent residency will be granted if you continue with research activities.
- Nationality will be granted if you demonstrate outstanding research activities.



## 우수인재 패스트트랙

### 단계 별 요건



#### \* 연구실적?

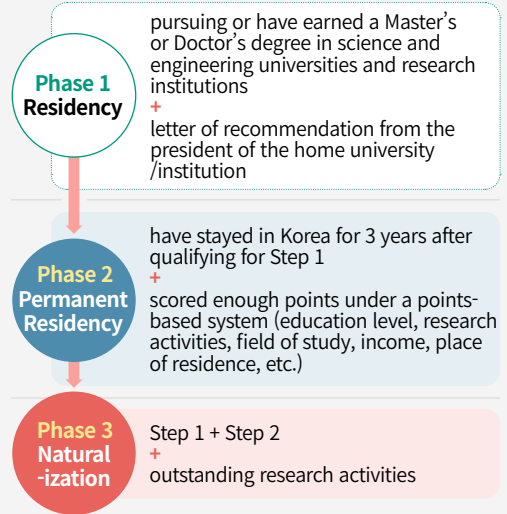
SCI, SSCI, A&HCI 급 학술지 논문 게재 또는 KCI에 등재된 학술지 등에 논문 게재, 국·내외 특허 등록 실적 등

### 무엇이 다른가요?

영주자격 및 국적을 취득할 수 있는 시간을 단축 (**6년 ▶ 3년**)하고, 절차를 간소화(**5단계 ▶ 3단계**)합니다.

또, 졸업 후 취업에 대한 부담없이 우선 거주 비자를 허용하며, 맞춤형 지원을 통해 손쉽게 국내에 정착할 수 있도록 합니다.

## How Does Global Talents Fast-Track Program Work?



#### \* What Does 'Research Activities' Mean?

Publishing your theses in SCI/SSCI/A&HCI/KCI-indexed journals or acquiring domestic/international patents

### What Is Different About This Program?

In-country residence requirement for obtaining a permanent residency and nationality is reduced **from 6 years to 3 years**. The pathway to permanent residency and naturalization is shortened **from 5 Steps to 3 Steps**. After graduation, a residency visa is granted regardless of whether you have a job or not. Also, you will be provided with tailored support measures that will help you settle in Korea.

## Q&A

### 우수인재 패스트트랙 관련 이공계특성화 기관은 무엇인지?

과학기술정보통신부 산하 공공기관으로서 특별법에 따른 4개 과학기술원 및 과학기술분야 정부출연연구기관 등의 설립·운영 및 육성에 관한 법률 제33조의2에 따른 대학원대학



### 가족과 함께 국내에서 체류하는 것이 가능한지?

1단계 거주자격을 취득하는 경우, 해당 자격을 유지하는 동안 배우자 및 미성년 자녀도 함께 거주 자격 부여. 2단계 영주자격을 취득한 후에는 배우자 및 미성년 자녀도 함께 영주자격 부여



### 3단계 귀화를 한 후에는 원래의 국적을 포기하여야 하는지?

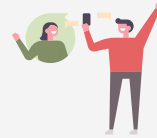
일반적인 경우 대한민국 국적을 취득한 외국인은 1년 내에 원래의 국적을 포기하여야 하지만, 우수인재로서 특별 귀화한 경우에는 복수국적 유지가 가능(외국국적 포기 의무 면제)



## Q&A

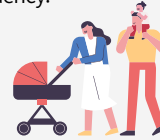
### What are science and engineering specialized universities and research institutes related to Global talents fast track?

There are 4 public institutions that are affiliated to the Ministry of Science and ICT. There is also graduate university that is established under Article 33 of Operation and Fostering of Government-Funded Science and Technology Research Institute as well.



### Is it possible to reside with family members in Korea?

When a personnel has obtained stage 1 residential qualification, while continuation of the qualification, spouse and kinship are also eligible to reside. In stage 2 qualification, spouse and kinship are also granted permanent residency.



### Is it required to renounce former nationality after stage 3 naturalization?

In ordinary situations, foreigners who have obtain Korean nationality must renounce former nationality. However, when an excellent personnel has obtained Korean nationality through this system, dual-nationality is allowed.(obligation of renunciation of foreign nationality is excused)

